



**RE025.EXT**



**RE026.EXT**



**RE027.EXT**



**RE028.EXT**



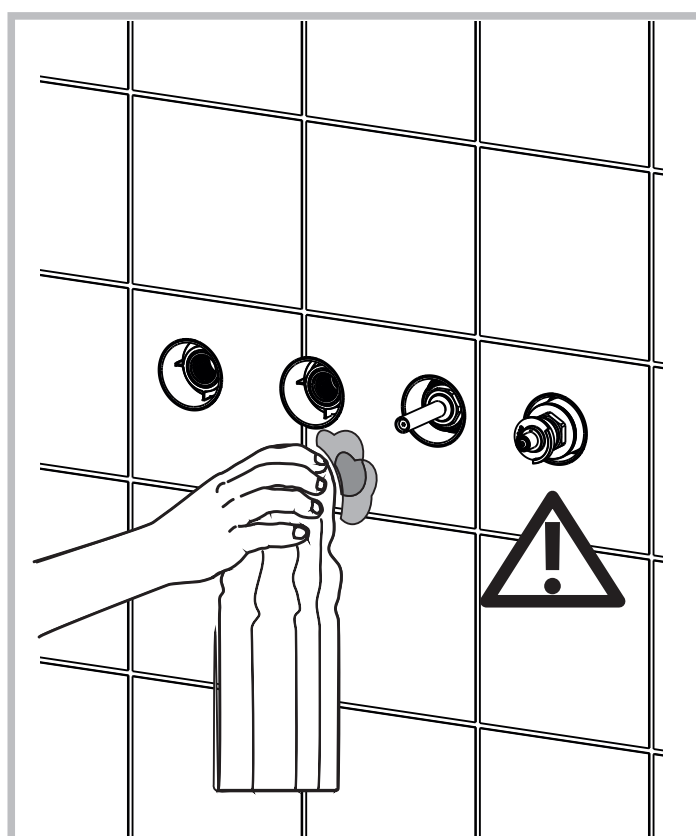
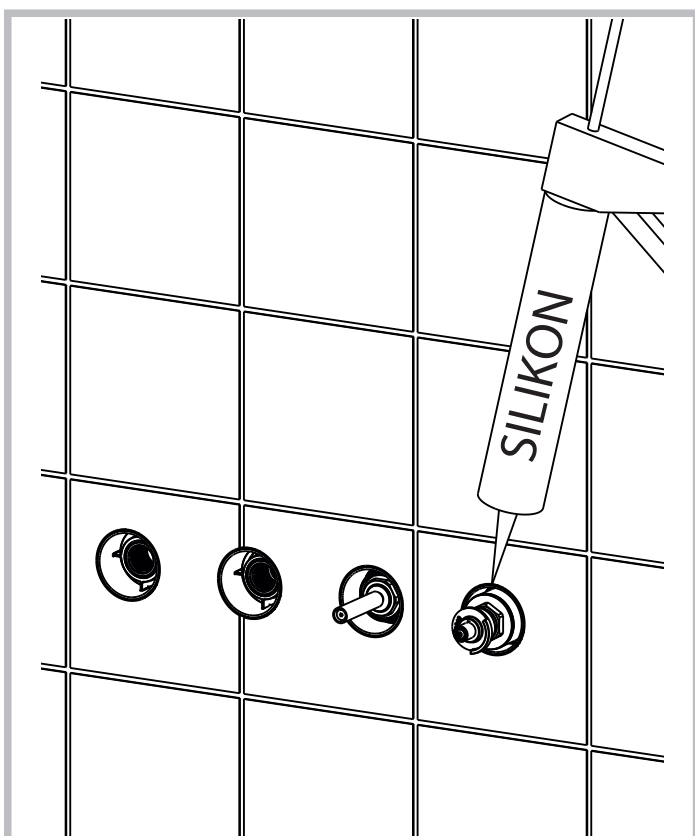
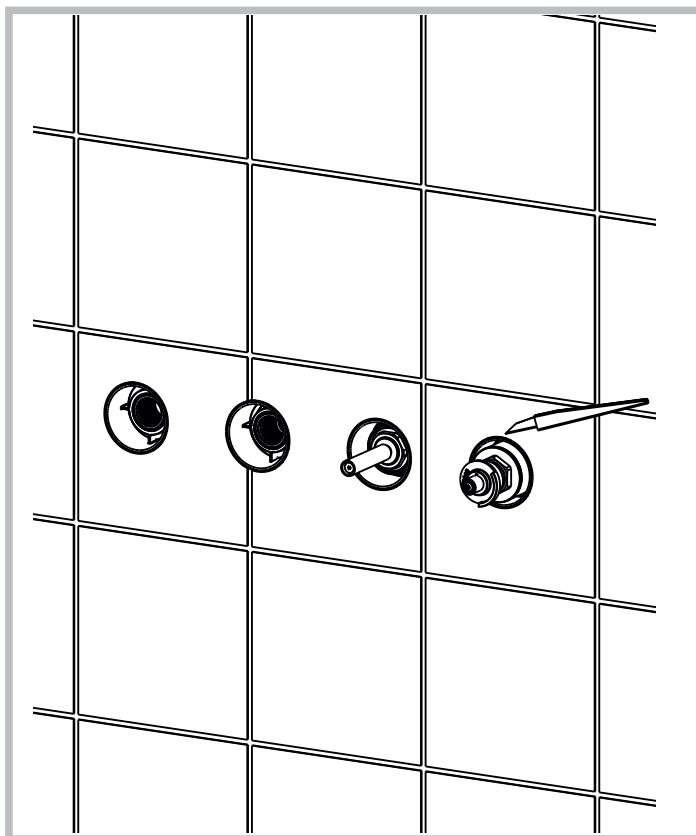
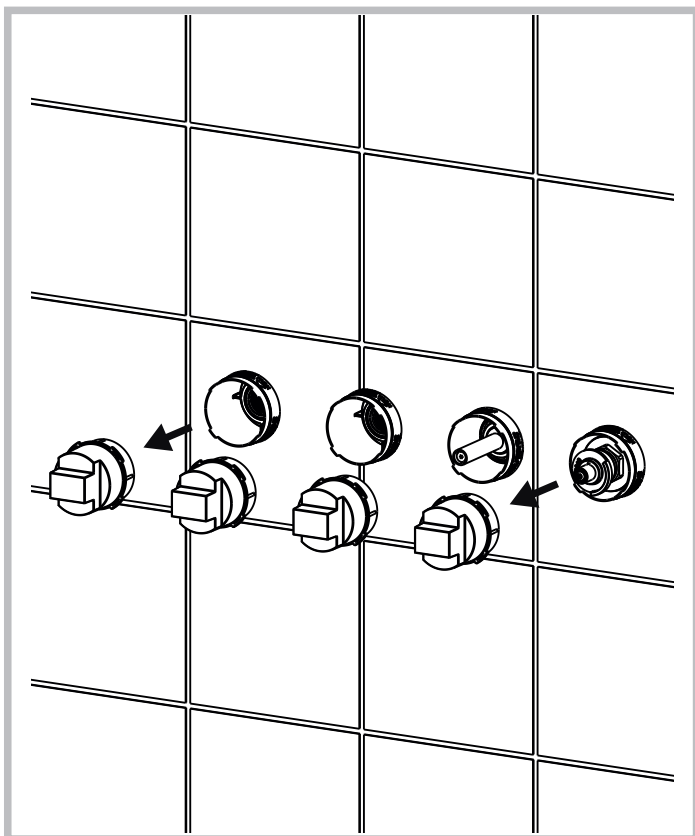
**RE030.EXT**



**RE029.EXT**

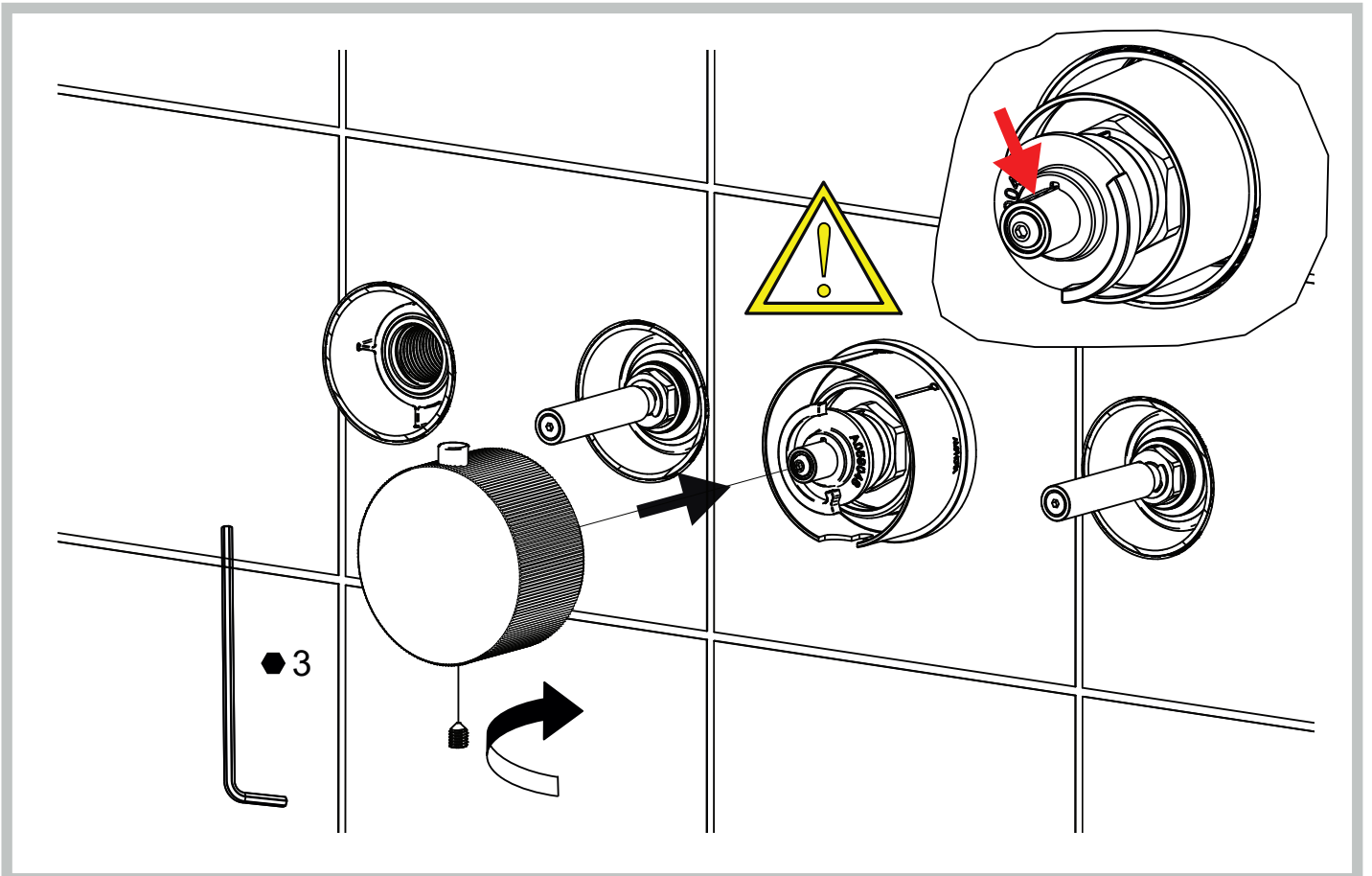
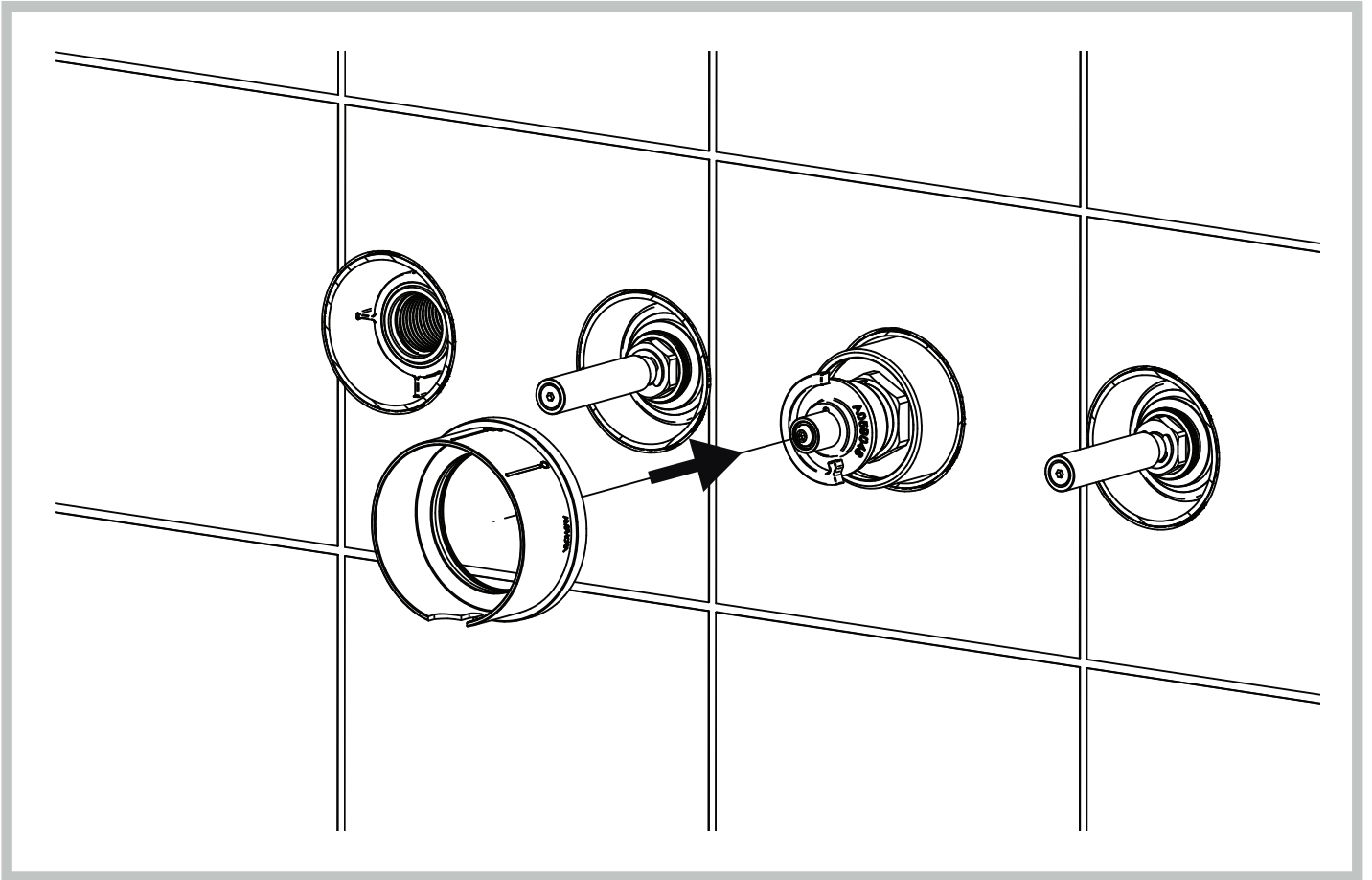
2

PRE-INSTALLATION  
PREPARAZIONE AL MONTAGGIO



3

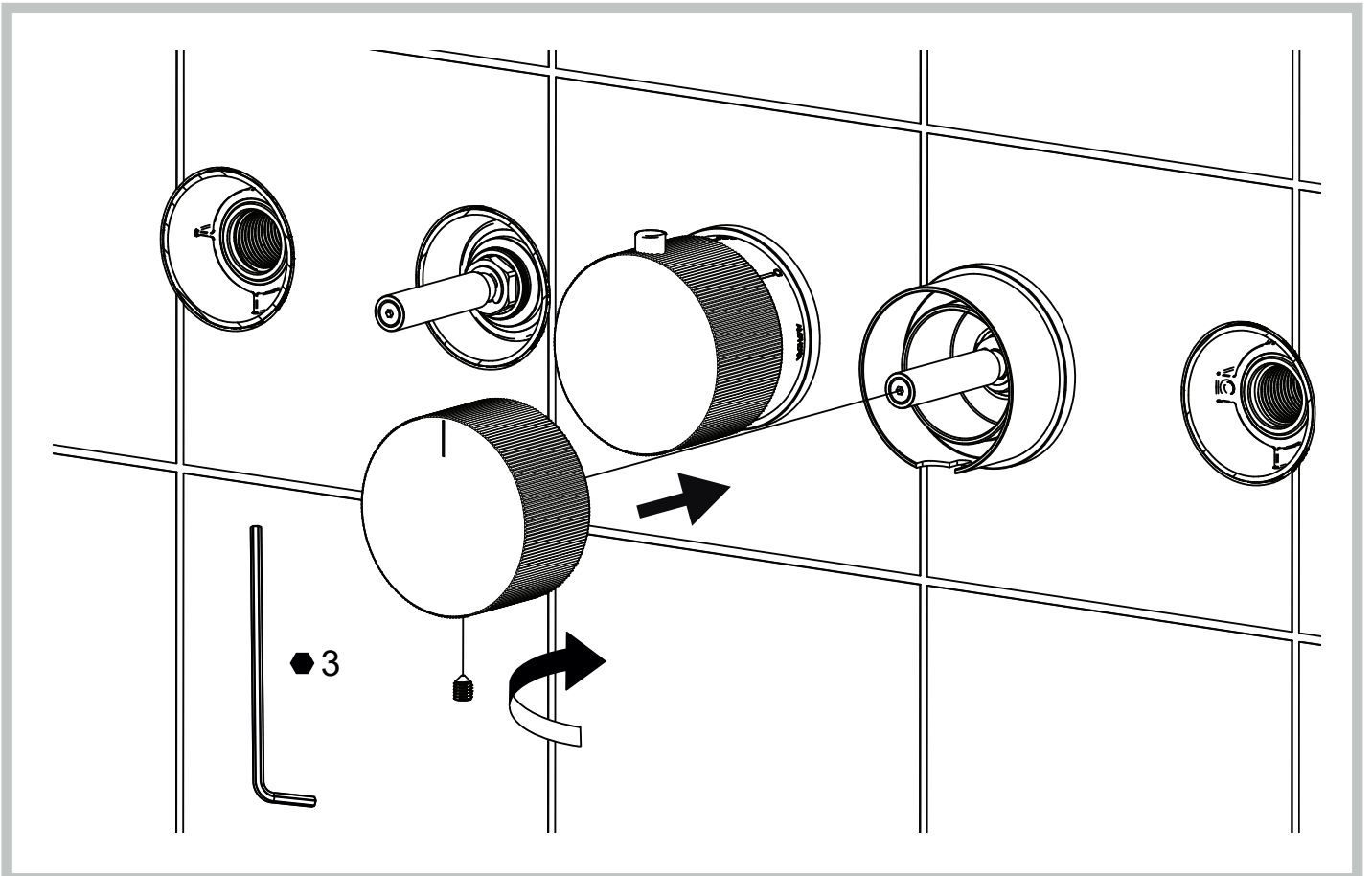
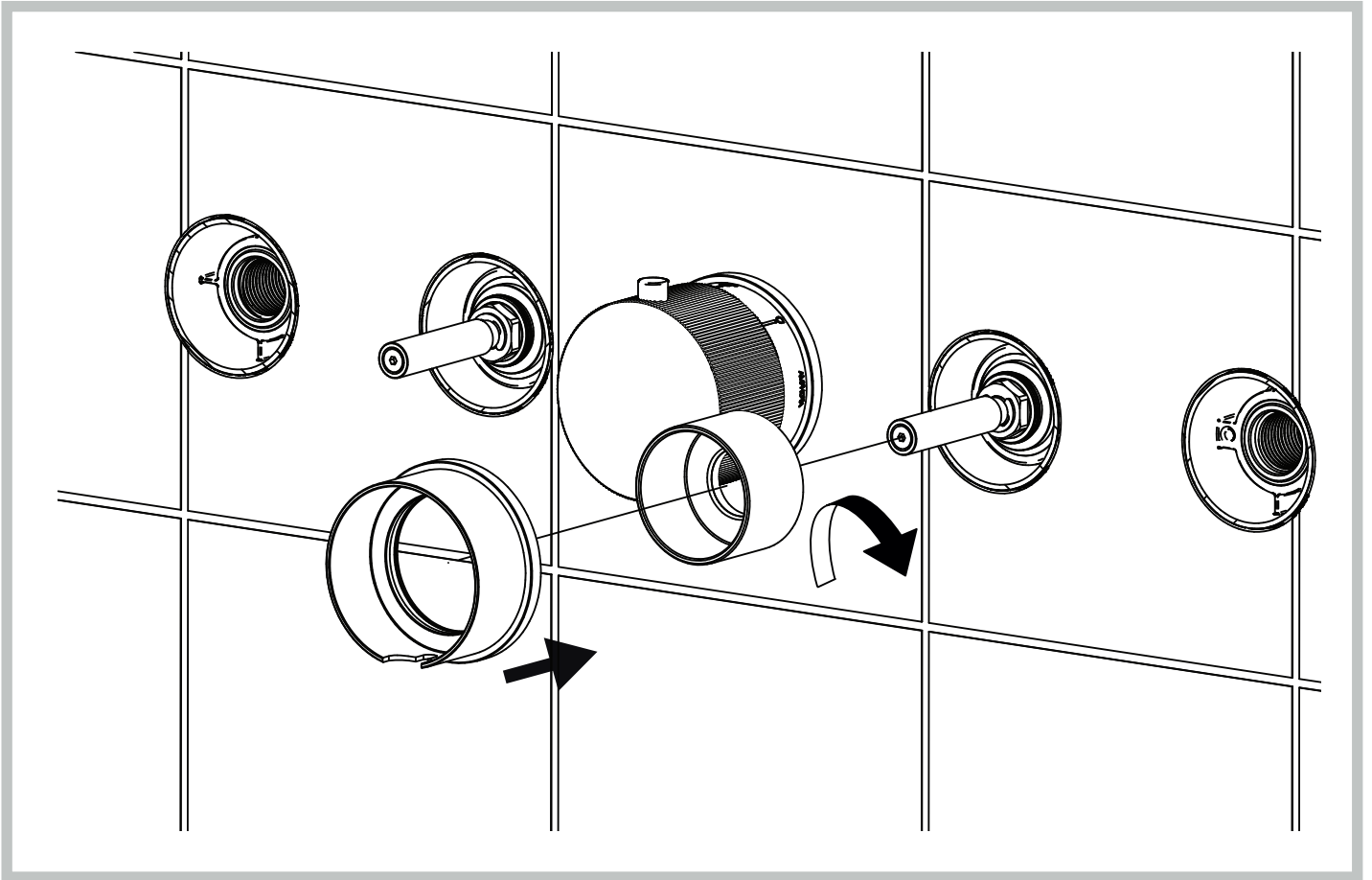
INSTALLATION OF EXTERNAL PARTS: THERMOMIXER  
INSTALLAZIONE DELLE PARTI ESTERNE: MISCELATORE TERMOSTATICO



4

INSTALLATION OF EXTERNAL PARTS: STOP TAPS (ART. RE029-30) OR DIVERTERS (ART. RE025-26-27-28)

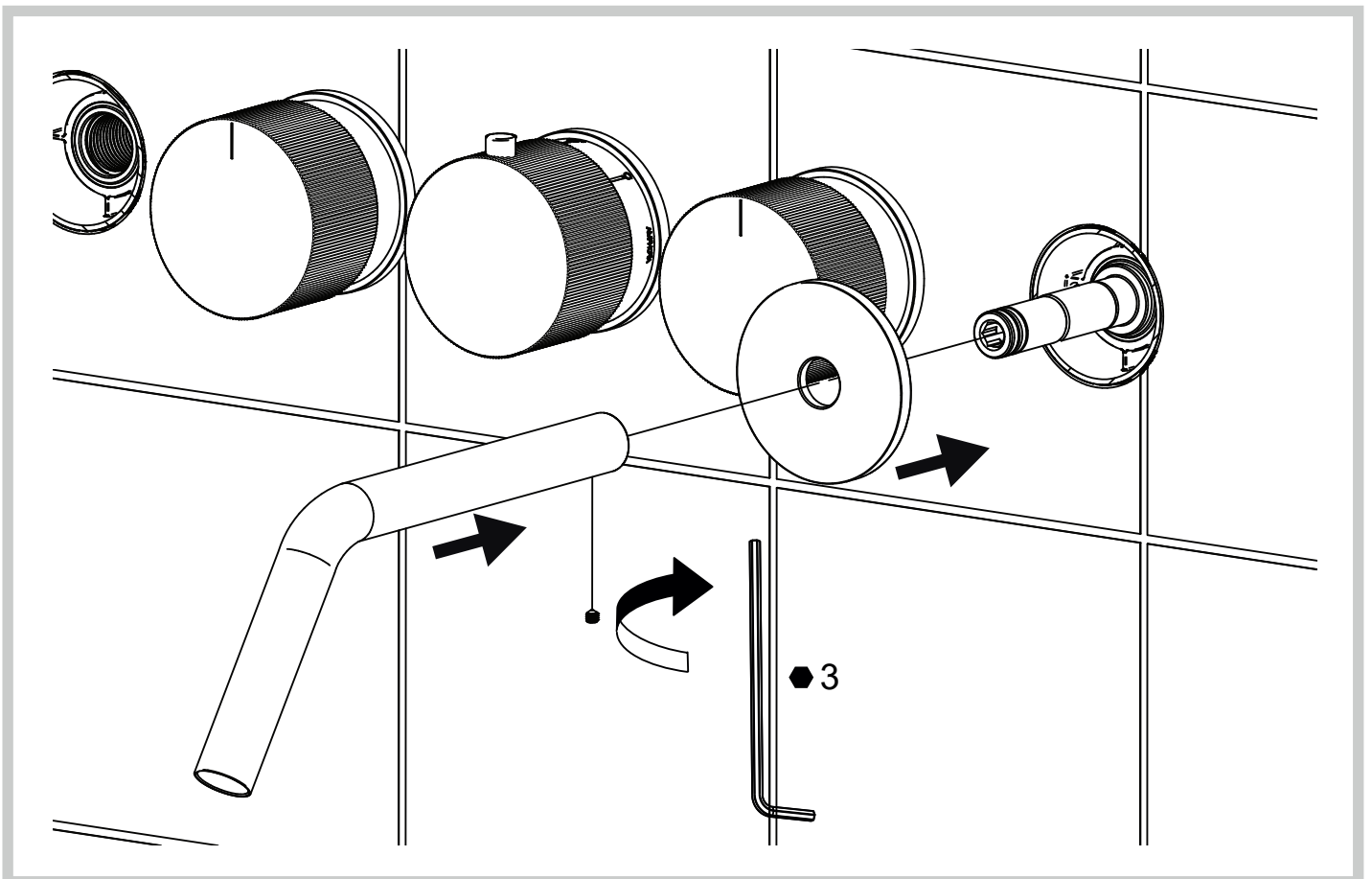
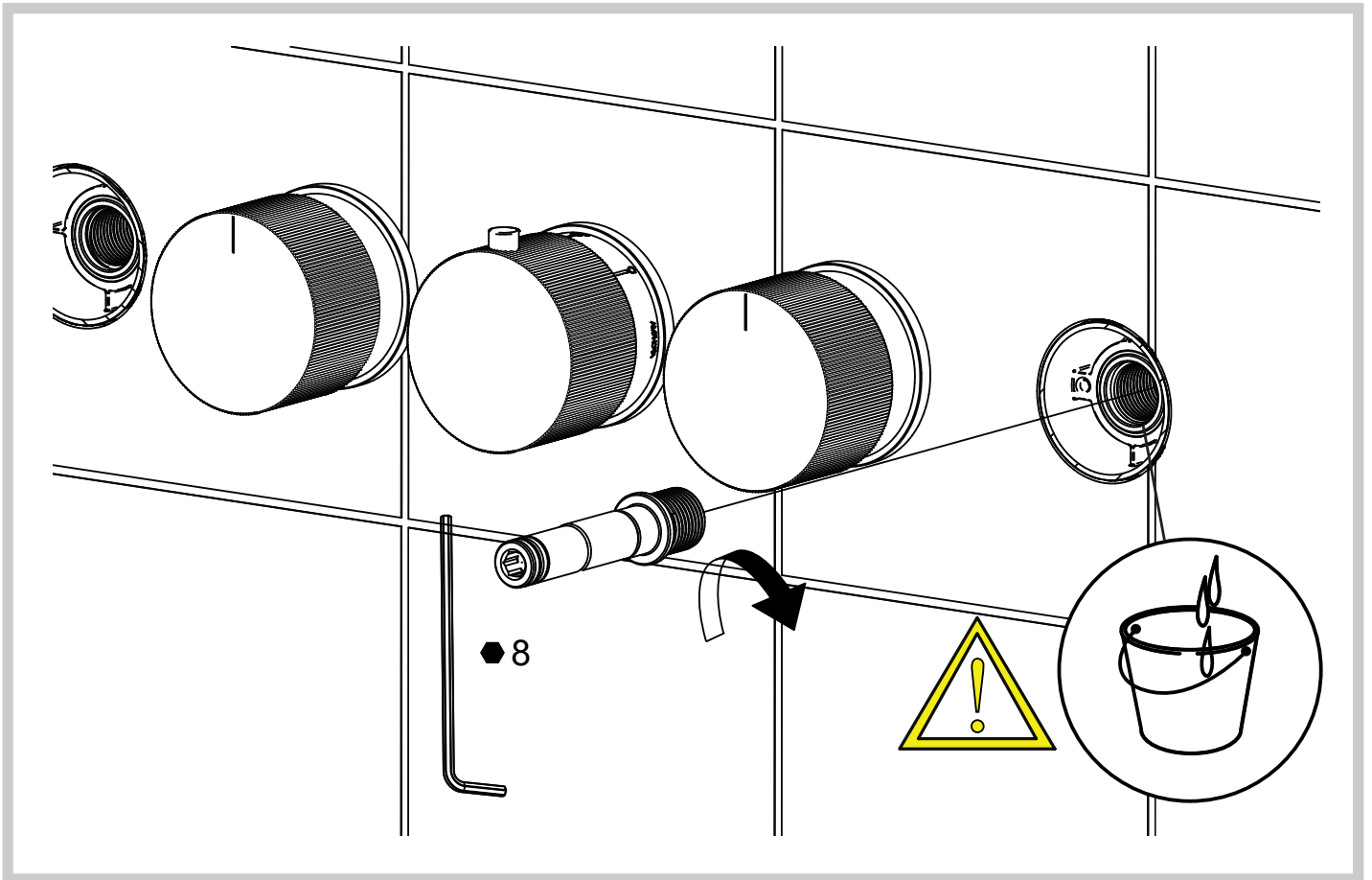
INSTALLAZIONE DELLE PARTI ESTERNE: RUBINETTI D'ARRESTO (ART. RE029-30) O DEVIATORI (ART. RE025-26-27-28)

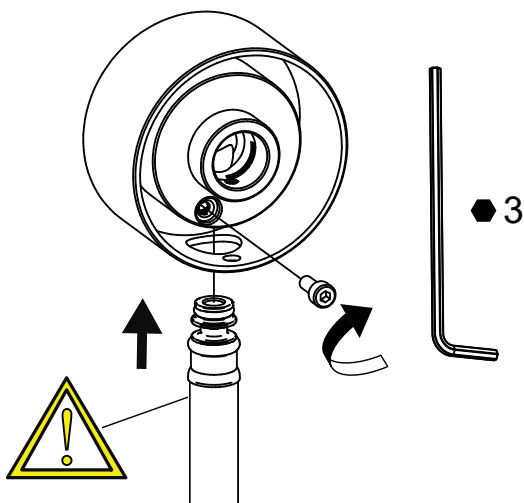
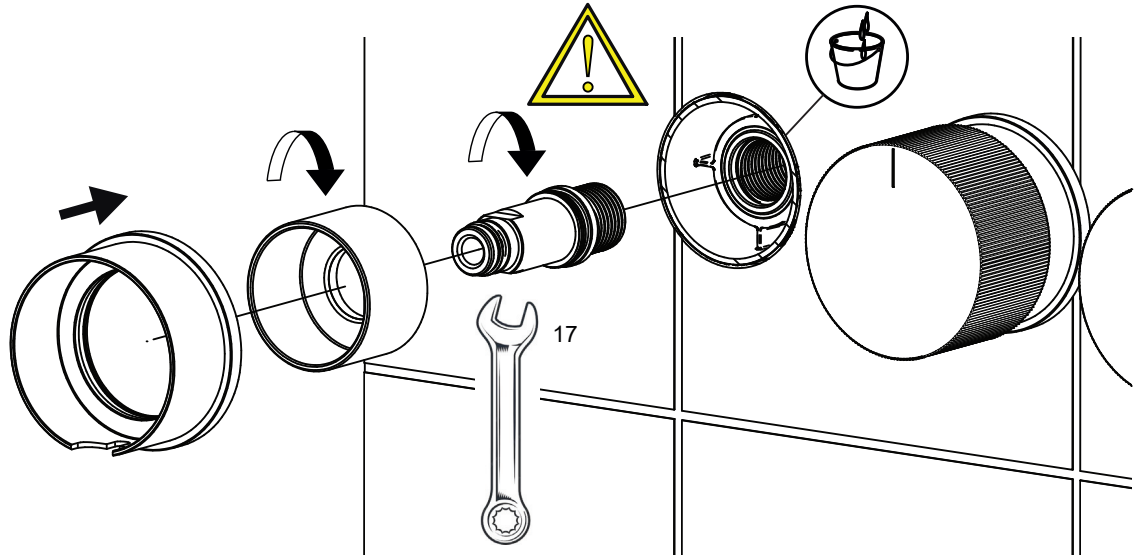


5

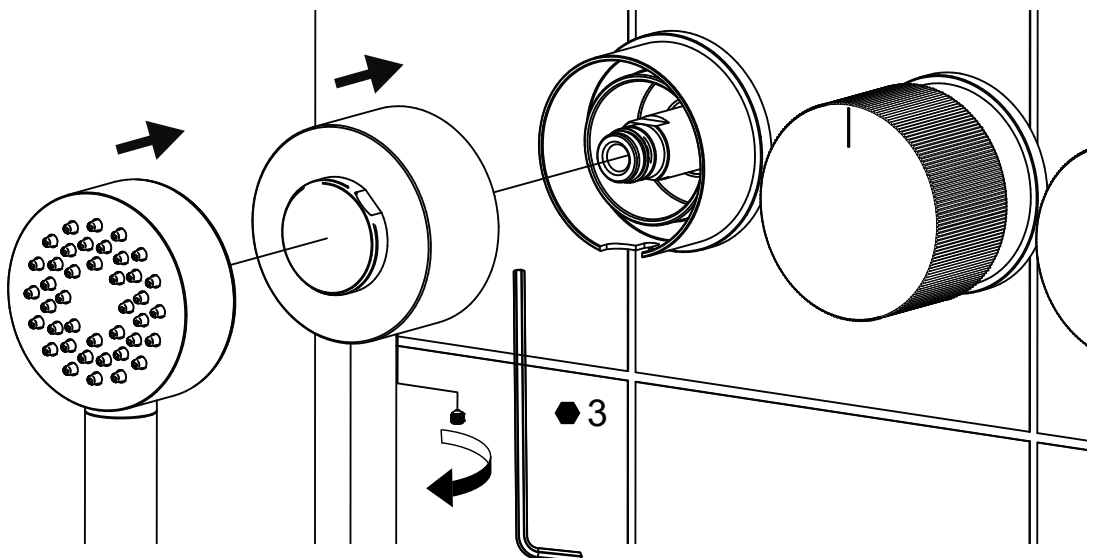
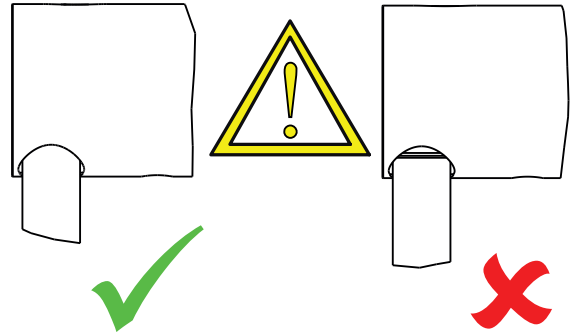
INSTALLATION OF EXTERNAL PARTS: SPOUT (ART. RE029)

INSTALLAZIONE DELLE PARTI ESTERNE: BOCCA DI EROGAZIONE (ART. RE029)

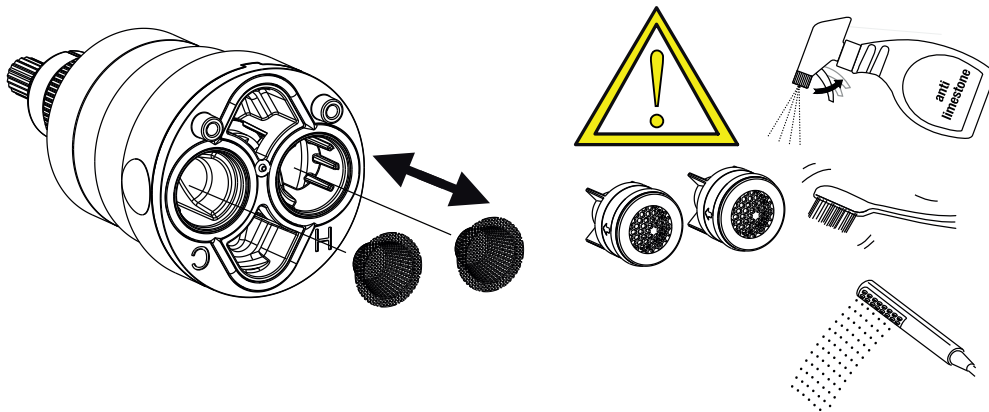
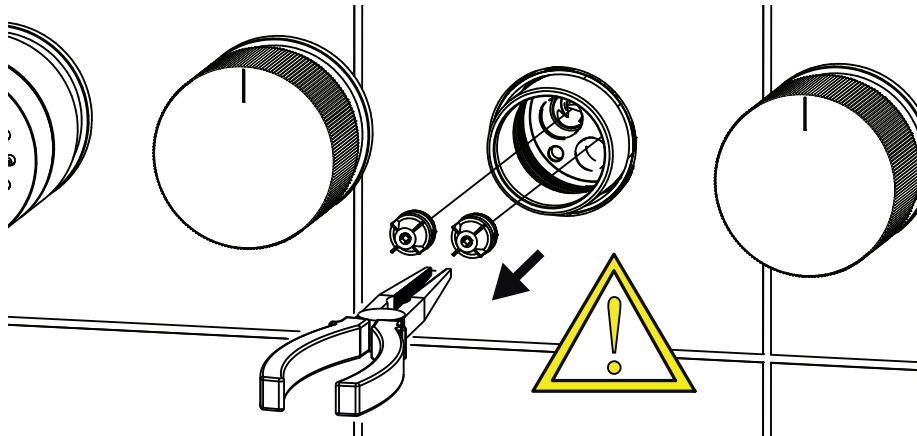
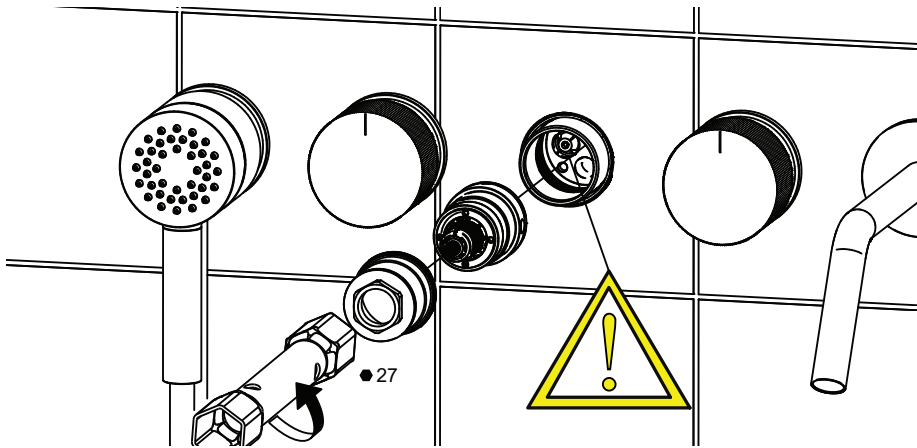
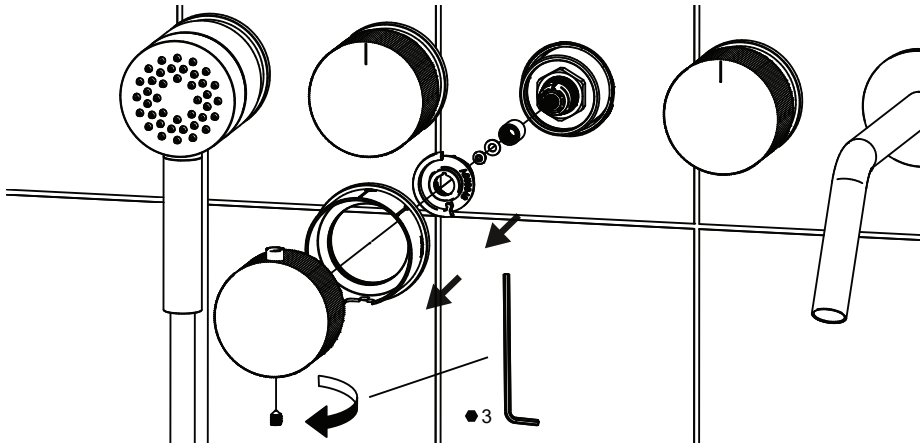
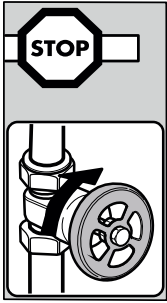




ATTENTION:  
 CHECK THE CORRECT POSITION OF THE HOSE  
 ATTENZIONE:  
 VERIFICARE IL CORRETTO POSIZIONAMENTO DEL FLESSIBILE

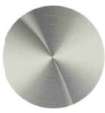










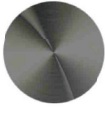
















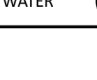
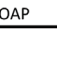
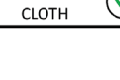
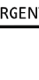



# MAINTENANCE (CARTRIDGE REPLACEMENT) MANUTENZIONE (SOSTITUZIONE CARTUCCIA)





# CLEANING - PULIZIA - NETTOYAGE - REINIGUNG - LIMPIEZA

Finish		✓			✗	
<b>BS Brushed Steel</b> 316 stainless steel		 WATER ✓	 LIQUID SOAP ✓	 SMOOTH CLOTH ✓	 ACID/ABRASIVE DETERGENT ✗	 ABRASIVE SPONGE ✗
		 WATER ✓	 LIQUID SOAP ✓	 SMOOTH CLOTH ✓	 ACID/ABRASIVE DETERGENT ✗	 ABRASIVE SPONGE ✗
<b>BB Brushed Black</b> PVD finish on stainless steel		 WATER ✓	 LIQUID SOAP ✓	 SMOOTH CLOTH ✓	 ACID/ABRASIVE DETERGENT ✗	 ABRASIVE SPONGE ✗
		 WATER ✓	 LIQUID SOAP ✓	 SMOOTH CLOTH ✓	 ACID/ABRASIVE DETERGENT ✗	 ABRASIVE SPONGE ✗
<b>BC Brushed Copper</b> PVD finish on stainless steel		 WATER ✓	 LIQUID SOAP ✓	 SMOOTH CLOTH ✓	 ACID/ABRASIVE DETERGENT ✗	 ABRASIVE SPONGE ✗
		 WATER ✓	 LIQUID SOAP ✓	 SMOOTH CLOTH ✓	 ACID/ABRASIVE DETERGENT ✗	 ABRASIVE SPONGE ✗

AMPHORA  
WATER SOURCE

Via dello Statuario 15  
 I-55045 Pietrasanta - Italy  
 info@amphoradesign.it  
 Rocco Ponsi  
 +39 345 3916748  
 rocco.ponsi@amphoradesign.it